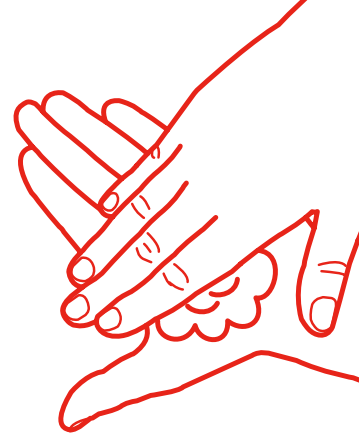
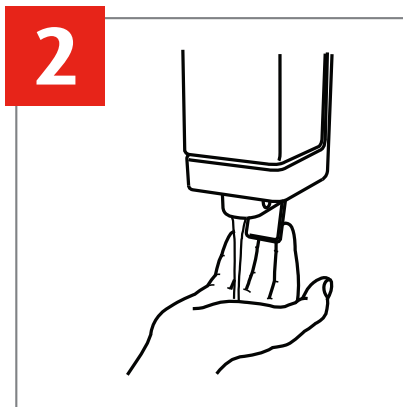


HOW TO WASH YOUR HANDS



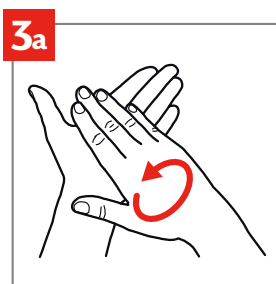
1
Wet hands with running water (preferably warm, for comfort).



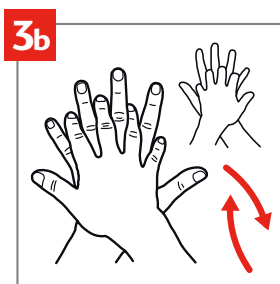
2
Apply soap to hands.



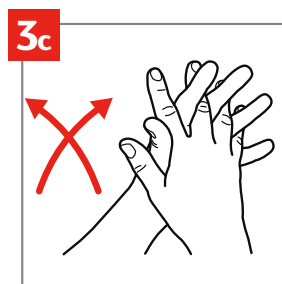
3
Lather soap and rub hands for at least 15 seconds, including:



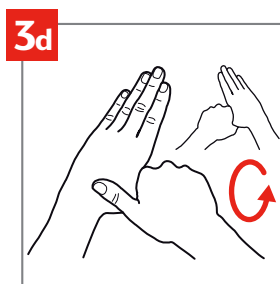
3a
palm to palm,



3b
back of hands,



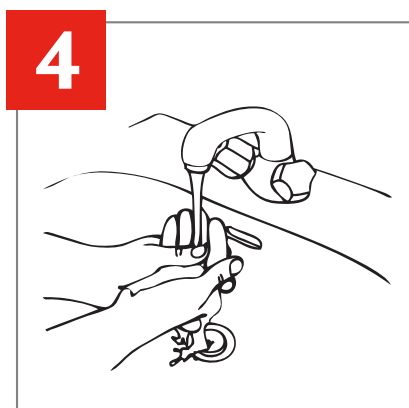
3c
in between fingers, and backs of fingers,



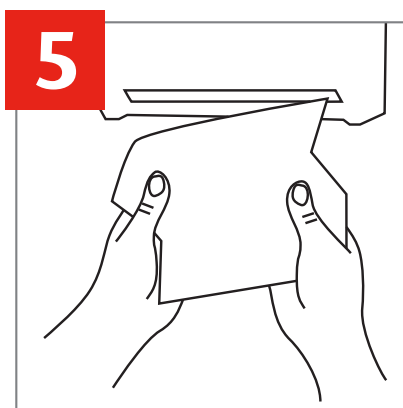
3d
around thumbs and



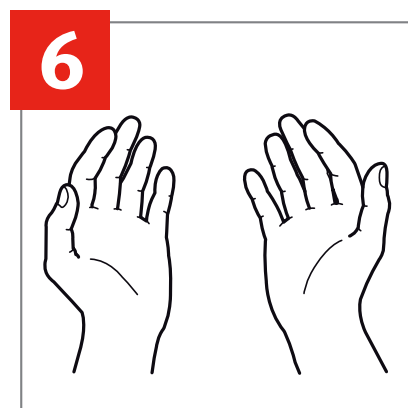
3e
tips of fingers.



4
Rinse hands with water.



5
Dry hands thoroughly.



6
Your hands are clean.

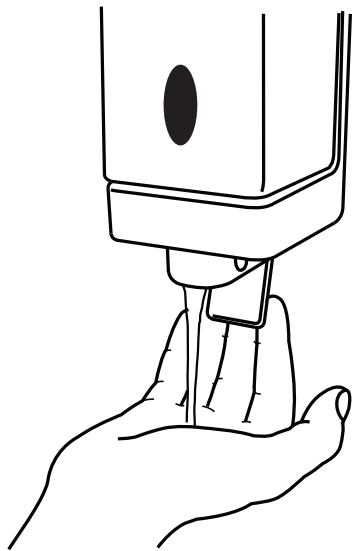
Our aim is to provide a washroom facility that consistently meets the highest standard of hygiene. To ensure that the facility remains in a clean and hygienic condition at all times, the proper use of this facility is a key step to ensuring your toilet and washroom remains clean and hygienic.

Do not place paper towelling on toilet seats. Maintaining cleanliness in this toilet facility helps to protect staff, students and visitors from the risks of bacterial infection, transmission of germs and the unpleasant experience of odours.

HOW TO SANITISE YOUR HANDS

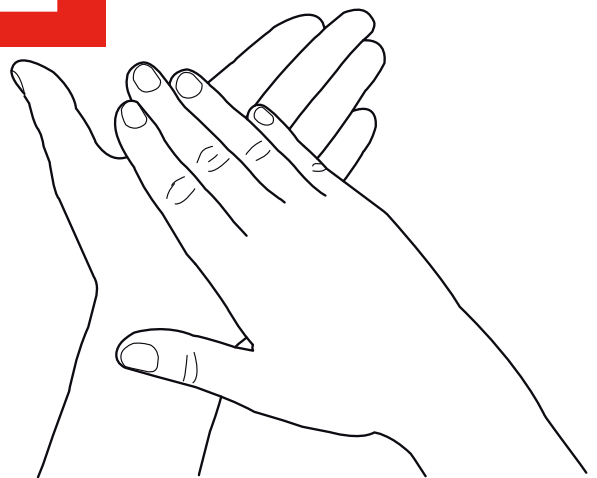


1



Press the base of the unit with the palm of your hand to release the hand sanitiser into your palm.

2



Rub your hands together.

Rub the gel over all the surfaces of your hands and fingers until your hands are dry. This should take around 20 seconds.

Our aim is to provide a washroom facility that consistently meets the highest standard of hygiene. To ensure that the facility remains in a clean and hygienic condition at all times, the proper use of this facility is a key step to ensuring your toilet and washroom remains clean and hygienic.

Do not place paper towelling on toilet seats. Maintaining cleanliness in this toilet facility helps to protect staff, students and visitors from the risks of bacterial infection, transmission of germs and the unpleasant experience of odours.